

# Extreme ultra-soft X-ray variability in an eROSITA observation of the narrow-line Seyfert 1 galaxy 1H 0707–495

Th. Boller<sup>1</sup>, T. Liu<sup>1</sup>, P. Weber<sup>2</sup>, R. Arcodia<sup>1</sup>, T. Dauser<sup>2</sup>, J. Wilms<sup>2</sup>, K. Nandra<sup>1</sup>, J. Buchner<sup>1</sup>, A. Merloni<sup>1</sup>,  
M. J. Freyberg<sup>1</sup>, M. Krumpel<sup>3</sup>, and S. G. H. Waddell<sup>1</sup>

<sup>1</sup> Max-Planck-Institut für extraterrestrische Physik, Giessenbachstrasse 1, 85748 Garching, Germany  
e-mail: bo1@mpe.mpg.de

<sup>2</sup> Dr. Karl Remeis-Observatory and Erlangen Centre for Astroparticle Physics, Friedrich-Alexander-Universität Erlangen-Nürnberg, Sternwartstr. 7, 96049 Bamberg, Germany

<sup>3</sup> Leibniz-Institut für Astrophysik Potsdam (AIP), An der Sternwarte 16, 14482 Potsdam, Germany

Received 1 September 2020 / Accepted 5 November 2020

## ABSTRACT

The ultra-soft narrow-line Seyfert 1 galaxy 1H 0707–495 is a well-known and highly variable active galactic nucleus (AGN), with a complex, steep X-ray spectrum, and has been studied extensively with *XMM-Newton*. 1H 0707–495 was observed with the extended ROentgen Survey with an Imaging Telescope Array (eROSITA) aboard the Spectrum-Roentgen-Gamma (SRG) mission on October 11, 2019, for about 60 000 s as one of the first calibration and pointed verification phase (CalPV) observations. The eROSITA light curves show significant variability in the form of a flux decrease by a factor of 58 with a  $1\sigma$  error confidence interval between 31 and 235. This variability is primarily in the soft band, and is much less extreme in the hard band. No strong ultraviolet variability has been detected in simultaneous *XMM-Newton* Optical Monitor observations. The UV emission is  $L_{UV} \approx 10^{44}$  erg s<sup>-1</sup>, close to the Eddington limit. 1H 0707–495 entered the lowest hard flux state seen in 20 yr of *XMM-Newton* observations. In the eROSITA All-Sky Survey (eRASS) observations taken in April 2020, the X-ray light curve is still more variable in the ultra-soft band, but with increased soft and hard band count rates more similar to previously observed flux states. A model including relativistic reflection and a variable partial covering absorber is able to fit the spectra and provides a possible explanation for the extreme light-curve behaviour. The absorber is probably ionised and therefore more transparent to soft X-rays. This leaks soft X-rays in varying amounts, leading to large-amplitude soft-X-ray variability.

**Key words.** accretion, accretion disks – galaxies: Seyfert – X-rays: general

## 1. Introduction

All previous and present X-ray missions show that many narrow-line Seyfert 1 galaxies (NLS1; see [Osterbrock & Pogge 1985](#) and [Goodrich 1989](#)) have remarkable X-ray properties compared to Seyfert 1 galaxies with broader Balmer lines. Narrow-line Seyfert 1 galaxies are generally characterised by steep soft-X-ray spectra with photon indices of up to about 5 from simple power-law fits. Detailed spectral modelling shows that NLS1s often have very strong soft-X-ray excess components compared to their hard X-ray tails. A clear anti-correlation is found between the ROSAT spectral softness and the H $\beta$  full-width at half-maximum intensity (FWHM) in type 1 Seyfert galaxies ([Boller et al. 1996](#)) and quasars ([Laor et al. 1997](#)). This is remarkable as the X-ray emission from most type 1 Seyfert galaxies originates predominantly from within a few to a few tens of Schwarzschild radii of their black holes, while Seyfert optical permitted lines are formed in a separate and significantly larger region. It appears that the anti-correlation between H $\beta$  FWHM and ROSAT spectral softness is part of a more general set of relations which involve the [Boroson & Green \(1992\)](#) primary eigenvector, and it has been suggested that NLS1s may be a subset of type 1 Seyfert galaxies that are accreting at relatively high fractions of the Eddington rate ([Tanaka et al. 2005](#)). Furthermore, NLS1s often show sharp spectral cut-offs in the

high-energy spectrum, an observation that is still a point of controversy (see [Miller & Turner 2013](#); [Risaliti 2013](#)). These objects also show remarkably rapid, large-amplitude X-ray variability. One spectacular object, the radio-quiet, ultra-soft NLS1, IRAS 13224–3809, shows persistent giant-amplitude variability events by factors of 35–60 on timescales of just a few days, most likely due to strong relativistic effects ([Boller et al. 1997](#)). The ROSAT HRI light curve of IRAS 13224–3809 is non-linear in character, suggesting that the X-ray emission regions on the accretion disc interact non-linearly or are affected by non-linear flux amplification. Dramatic flux and spectral variability has also been seen in many other NLS1s – as described by some of the early ROSAT and ASCA publications – such as for example Zwicky 159.034 ([Brandt et al. 1995](#)), WPVS007 ([Grupe et al. 1995](#)), 1H 0707-495 ([Hayashida 1997](#)), RE J1237+264 ([Brandt et al. 1995](#)), PHL 1092 ([Forster & Halpern 1996](#)), Mrk 766 ([Leighly et al. 1996](#)), and Ark 564 ([Brandt et al. 1994](#)).

1H 0707–495 has been observed with *XMM-Newton* for over 20 yr. In this paper we report the eROSITA discovery of an extreme ultra-soft X-ray spectral state. The light curve is dominated by changes in the ultra-soft band, with much less pronounced variability in the hard X-ray band and no significant ultraviolet variability. We describe our data analysis in Sect. 2, discuss the light curve of the source in Sect. 3, and then perform flux-resolved spectroscopy in Sect. 4, where we show that

**Table 1.** Joint observations of SRG/eROSITA (ObsID 300003) and *XMM-Newton* (0853000101) of 1H 0707-495.

eROSITA				
	Start <sup>(a)</sup>	End <sup>(b)</sup>	expo <sup>(c)</sup>	rate <sup>(d,e)</sup>
TM1	19:00:00	22:59:12	14.2	1.43 ± 0.11
TM2	20:06:50	22:59:12	10.3	1.20 ± 0.12
TM5	09:00:48	22:59:12	49.4	2.68 ± 0.08
TM6	09:00:48	22:59:12	50.3	2.91 ± 0.08
TM7	09:00:48	22:59:12	49.8	2.89 ± 0.08
<i>XMM-Newton</i>				
EPIC-pn	09:38:14	01:21:40 <sup>(b)</sup>	52.0	14.70 ± 0.19
EPIC-MOS2	09:06:53	01:14:49 <sup>(b)</sup>	57.3	3.49 ± 0.08
OM	09:14:54	11:46:42		
	14:58:42	01:21:10 <sup>(b)</sup>	44.0	12.56 ± 0.26

**Notes.** All eROSITA cameras were operated in FrameStore mode with the FILTER setup (TM3 and TM4 were still switched off), EPIC-pn and MOS2 cameras in LargeWindow mode with MEDIUM filter, OM in Image/Fast mode in several exposures. 1H 0707-495 was too weak for RGS1 and RGS2. EPIC-MOS1 was still in its non-scientific CALCLOSED setup due to a Single-Event-Upset in a previous observation. <sup>(a)</sup> For eROSITA the start and end date is October 11, 2019 (times in UTC). <sup>(b)</sup> For *XMM-Newton* the start date is October 11, 2019 and the end date is October 12, 2019 (times in UTC). Note the gap in OM exposure. <sup>(c)</sup> Net exposure time is given in ks. <sup>(d)</sup> For eROSITA and *XMM-Newton* the 0.5–0.8 keV net count rates are given in units of  $10^{-2}$  counts  $s^{-1}$  after background subtraction. Note the different time ranges for the cameras. <sup>(e)</sup> The OM count rates are not re-scaled.

the variability can be explained by a temporally variable, ionised absorber (Sect. 5).

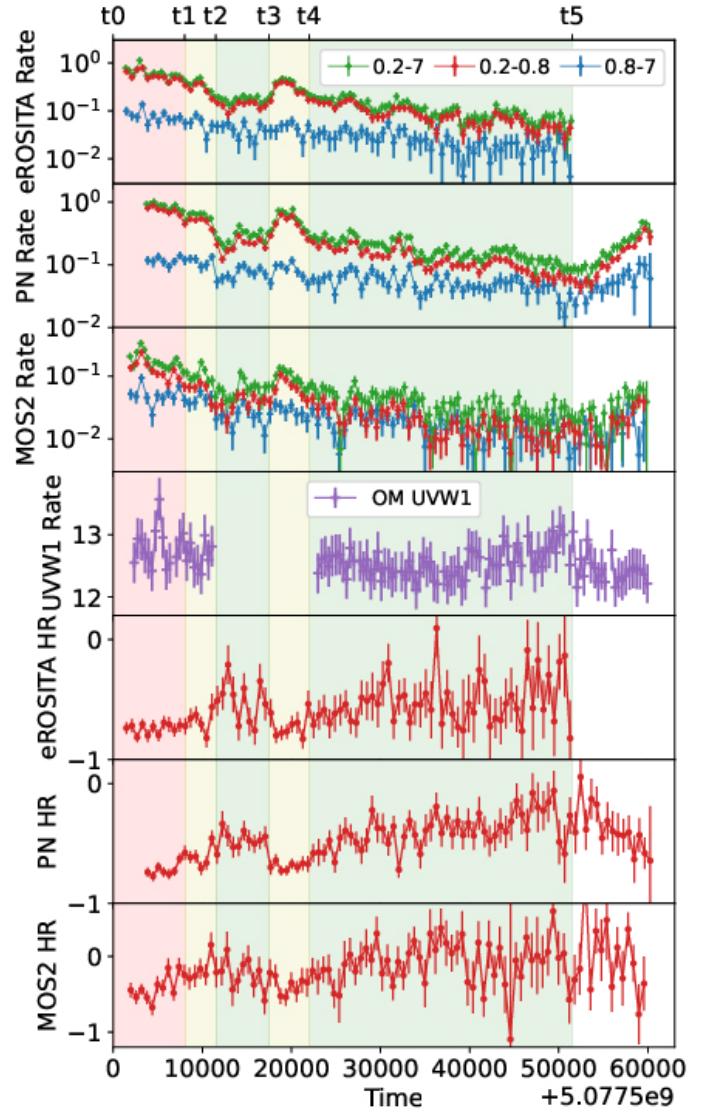
## 2. Data extraction

### 2.1. eROSITA

eROSITA (Predehl 2012; Merloni et al. 2012; Predehl et al. 2021) is the primary instrument on the Russian SRG mission (Sunyaev et al., in prep.). Following a CalPV phase eROSITA is presently performing 4 yr in scanning mode to create all-sky survey maps, superseding the ROSAT all-sky survey (Trümper 1984; Voges et al. 1999; Boller et al. 2016). Pointed observations are planned for after the survey phase.

1H 0707-495 was observed in a joint *XMM-Newton* and SRG observation during the Performance Verification (PV) phase of the SRG mission on October 11, 2019. As shown in Fig. 1 and Table 1, eROSITA started the observation slightly before *XMM-Newton* and also finished before. Telescope modules (TM) 5, 6, and 7 were active during the entire observation, whereas TM1 and TM2 were only activated for the last 16 and 10 ks of the observation, respectively, when the source was essentially static. 1H 0707-495 was also observed during the first eROSITA all-sky survey (eRASS1) between April 26 and 29, 2020, for a total exposure of 407 s. All cameras were active and the total number of counts is  $\sim 400$ .

Prepared event data were retrieved from the C945 version of the standard processing for eROSITA products. *srctool* version 1.49 from the eROSITA Science Analysis Software System (eSASS) was used to extract light curves, spectra, and the necessary auxiliary files for data analysis (Brunner et al. 2018, and in prep.). For the PV observation, data products were extracted



**Fig. 1.** Top three panels: background-subtracted light curves in the total (0.2–7.0 keV), soft (0.2–0.8 keV), and hard (0.8–7.0 keV) bands for eROSITA, EPIC-PN, and EPIC-MOS, respectively. Large amplitude flux changes of about a factor  $>50$  are detected in the total and soft X-ray light curves, with a normalised excess value of 34.8 and 44.6  $\sigma$ , respectively. The hard X-ray light curves and XMM OM light curve are much less variable, with normalised excess values of 2.1 and 1.7  $\sigma$ , respectively (c.f. Sects. 3.2 and 3.3). The XMM OM light curve is shown in the fourth panel. The corresponding hardness ratios for the X-ray light curves are shown at the bottom. During the brightening the hardness ratio becomes softer and during low count rate intervals the hardness ratio is harder. Three count rate states referred to as high, medium, and low are marked with light red, yellow, and green colours (Sect. 2.1). The X-ray total-band light curves have a bin size of 400 s; the soft and hard bands have a bin size of 600 s.

with a source extraction circle of  $60''$  in radius and a background extraction annulus with inner and outer radii of  $140''$  and  $240''$ , respectively, excluding nearby contaminating sources. For eRASS1 data, the background annulus radii were extended to  $230''$  and  $595''$  to increase the count statistics, albeit still excluding contaminating sources.

As shown in Fig. 1, for further characterisation we divide the PV observations into five count-rate-selected time intervals using six time points  $t_0 \dots t_5$ . The  $[t_0, t_1]$  section is selected as the high-count-rate state, the  $[t_1, t_2]$  and  $[t_3, t_4]$

sections are referred to as medium-count-rate states, the  $[t_2, t_3]$  and  $[t_4, t_5]$  sections are low-count-rate states, where  $t_0 = 58\,767.361111$ ,  $t_1 = 58\,767.453704$ ,  $t_2 = 58\,767.494213$ ,  $t_3 = 58\,767.563657$ ,  $t_4 = 58\,767.615741$ ,  $t_5 = 58\,768.020833$  (MJD). Flux-resolved spectral analysis is commonly used for highly variable objects, as applied for example by Kammoun et al. (2019) for NGC 4395. The time sequence applied for 1H 0707–495 in this paper is high-medium-low-medium-low.

## 2.2. XMM-Newton

The observation of 1H 0707–495 by *XMM-Newton* (Jansen et al. 2001) started on October 11, 2019, and lasted for 60 700 s until October 12, 2019 (ObsID 0853000101). Extraction of the data was performed using the XMM Science Analysis System (SAS) version 18.0.0. For EPIC-pn (Strüder et al. 2001), the source and background photons were taken from circular regions with radii of  $35''$  and  $106''$ , respectively. The background area was chosen on the same CCD chip as the source, and was chosen to be empty of other sources and exclude gaps in the CCD. The same applies for data taken from MOS2 (Turner et al. 2001), where source and background regions of  $17''$  and  $55''$  in radius were used. MOS1 did not deliver any science products during the observation. The source signal is too weak for an extraction from the Reflection Grating Spectrometer (RGS; den Herder et al. 2001).

The *XMM-Newton* Optical Monitor (OM; Mason et al. 2001) covered the entire joint observation with 11 UVW1 exposures in Image mode, 10 of which were also taken in Fast mode. We processed the OM data using the tasks `omichain` and `omfchain` of SAS version 18.0.0. The standard and recommended procedure was adopted and the output products were checked following the list of known caveats and visual tests advised in the guides<sup>1</sup>. We compared the surface brightness of 1H 0707–495 with two sources with high proper motion in the field, taken with the same aperture and with a similar count rate. The radial emission profiles were found to be very similar, and therefore the source can be considered close to point-like and with minor host contamination (see also Leighly & Moore 2004), also validating the automated coincidence loss correction in `omichain`.

## 2.3. Analysis methods

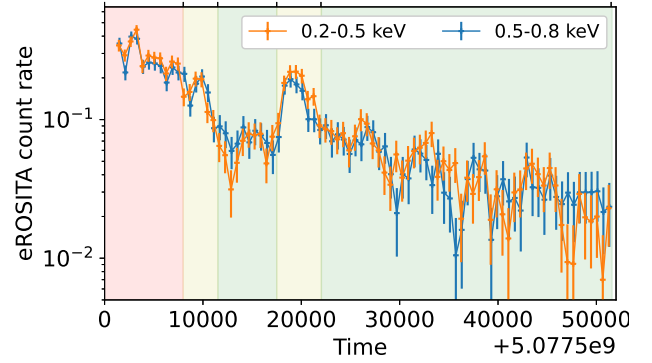
The Interactive Spectral Interpretation System (ISIS) in combination with HEASoft version 6.27.2 was used for the analysis of spectra and light curves. Cash (1979) statistics have been used for spectral fitting, as the signal to noise ratio (S/N) is insufficient for  $\chi^2$  statistics.

## 3. Light-curve analysis

In the following we describe the unique X-ray properties detected in the eROSITA observations. The results obtained from the simultaneous *XMM-Newton* observations are also discussed. We also report the first eROSITA all-sky survey observations performed in April 2020.

### 3.1. Detection of large-amplitude flux changes

During the eROSITA observations, 1H 0707–495 showed a dramatic flux drop in about one day (see Fig. 1). The source is brightest at the beginning of the observations, with rapid fluctuations in count rate, followed by a subsequent decline in count



**Fig. 2.** eROSITA light curves in the very-soft energy bands (0.2–0.5 keV (orange) and (0.5–0.8) keV (blue)). The light curves are very similar.

rate going down close to the background level. The highest count rate detected in the eROSITA (0.2–7.0) keV light curve is  $1.112 \pm 0.064$  counts  $s^{-1}$ . The corresponding lowest count rate is  $0.019 \pm 0.014$  counts  $s^{-1}$ . The resulting mean amplitude variability is a factor of 58, with a  $1\sigma$  error confidence interval with factors between 31 and 235. Similar large-amplitude count-rate changes are deduced from the EPIC-pn and XMM-MOS2 light curves, where the lowest count rate values are consistent with the corresponding background values.

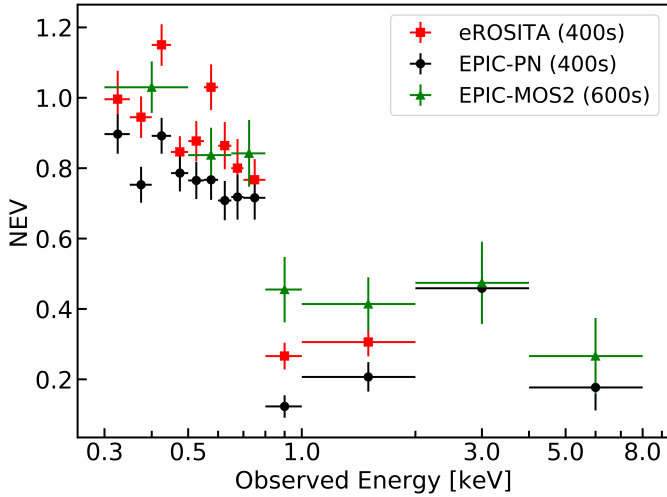
### 3.2. Energy dependence of the variability

Figure 1 presents the eROSITA and *XMM-Newton* light curves in the total (0.2–7.0 keV), soft (0.2–0.8 keV), and hard (0.8–7.0 keV) energy bands (cf. Fig. 3 for motivation for these energy band selections). The soft variability appears similar to the total band variability, with count-rate changes of a factor greater than 50. In the hard band, the variability amplitude is about a factor of 10, obtained from the XMM MOS2 light curve. The normalised excess variance (NEV) is a powerful and commonly used method to test whether a time series is significantly variable above a certain threshold (e.g. Nandra et al. 1997; Vaughan et al. 2003; Ponti et al. 2004). The NEV values have been calculated for the total, soft, and hard band eROSITA light curves based on Eqs. (1) and (2) of Boller et al. (2016). Both the total and soft band eROSITA light curves are highly variable with NEV values of 34.8 and 44.6  $\sigma$ , respectively. The NEV value for the hard eROSITA light curve is  $2.1\sigma$ , quantifying the higher amplitude variability in the soft and total bands compared to the hard energy band.

We further analysed the soft X-ray light curve in the energy bands (0.2–0.5) keV and (0.5–0.8) keV (see Fig. 2, top panel, for the eROSITA light curves). Interestingly, the light curve appears almost identical in both bands. Both are significantly variable with NEV values of 31.3 and 21.8  $\sigma$  for the (0.2–0.5) keV and (0.5–0.8) keV, respectively. Above 0.8 keV, the variability abruptly declines up to the highest energies probed (cf. Fig. A.1).

The NEV values are then computed in energy-resolved bins to create NEV spectra for each detector. The results are shown in Fig. 3. Larger time and energy bins are required for MOS2 given the lower number of counts. Normalised excess variance values may differ slightly between instruments due to varying observation exposures, and bin sizes. However, all NEV spectra reveal dramatic variability below 0.8 keV, with a striking drop off between 0.8 and 2.0 keV. Any NEV values above 2.0 keV could not be computed with eROSITA due to high background and very low variability, but for EPIC-PN and EPIC-MOS2, the

<sup>1</sup> <https://www.cosmos.esa.int/web/xmm-newton/sas-threads>



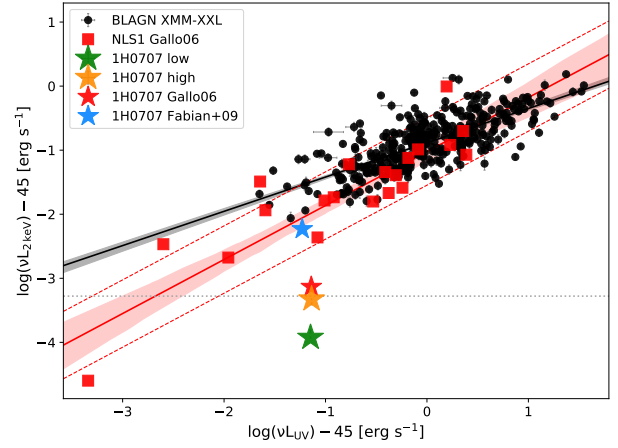
**Fig. 3.** Normalised excess variance spectra calculated for eROSITA, EPIC-pn, and EPIC-MOS2. All spectra show the same shape, with significant variability up to 0.8 keV followed by a sharp drop downwards between 0.8 and 2.0 keV.

variability increases slightly from 2 to 4 keV before dropping again from 4 to 8 keV.

The strong soft X-ray variability is extreme in relation to the weak hard X-ray variability and the lack of ultraviolet variability (see following section). Such extreme ultra-soft and large-amplitude flux variability in active galactic nuclei has not been detected with other X-ray observations so far. Extremely large-amplitude variability has been observed in the past in objects such as IRAS 13224–3809 (Boller et al. 1997), GSN 069 (Miniutti et al. 2019) and RX J1301.9+2747 (Giustini et al. 2020). What distinguishes the discovery here is the presence of such variability in the soft X-ray band, with simultaneous observations that show the absence of such variations in the hard X-rays (above 0.8 keV).

### 3.3. Absence of strong UV variability in XMM-Newton OM observations

The source remained quite constant in the UV based at an NEV value of  $1.7\sigma$ . This is indicated by both photometry from imaging and count rates from the timing light curve. The omichain photometry indicates a count rate level of  $\sim 12.56$  cts  $s^{-1}$  and an AB magnitude of  $\sim 15.8$ . No reddening correction was applied and the OM UVW1 data indicate the observed count rate. The omfchain light curve is shown in Fig. 1 with a bin time of 400 s. The light curve does not show significant variability during the  $\sim 60$  ks observation, in contrast to the highly variable soft-X-ray light curve. There is an indication of one low-amplitude count rate increase in the first OM exposure, but not of the order seen in soft X-rays. It is well known that in NLS1s, the optical-UV emission varies less than that in X-rays (e.g. Ai et al. 2013), a phenomenon also seen in 1H 0707–495 with the two very deep 500 ks XMM-Newton observations from 2008 and 2010 (Robertson et al. 2015; Done & Jin 2016). The OM data for these deep observations are remarkably constant. The largest difference is 10% in the UVW1. In particular, the OM rates were observed at  $\approx 11$  and  $\approx 14$  cts  $s^{-1}$  in those two epochs, respectively (Robertson et al. 2015), similarly to our 2019 observations. Moreover, Robertson et al. (2015) found no evidence of strong correlations between UV and X-rays on timescales of less than a week (but see Pawar et al. 2017).



**Fig. 4.**  $L_X-L_{UV}$  plane with our 1H 0707–495 observations in the high-(orange star) and low-(green star)-count-rate state. Results from an emcee (Foreman-Mackey et al. 2013) linear regression are shown for both broad-line AGNs (data points and regression as reported in Arcodia et al. 2019), (black circles; Liu et al. 2016) and NLS1s (data points from Gallo 2006, linear regression performed in this work). We computed the X-ray luminosity at 2 keV to compare with these literature measurements, while the UV proxy was computed at 3000, 2500, and 2910 Å in XMM-XXL (Liu et al. 2016), NLS1 (Gallo 2006), and our OM-UVW1 data, respectively. The best-fit linear regressions emcee (Foreman-Mackey et al. 2013) are shown with a solid line, with corresponding 16th–84th percentile uncertainty intervals in a shaded area. The red dashed lines correspond to the fit intrinsic scatter of the NLS1 relation. The 2000 observation of 1H 0707–495 from Gallo (2006) is shown with a red star instead of a red square; the median flux level from the 2008 observations reported in Fabian et al. (2009) is shown with a light blue star. The 2 keV flux level during the eROSITA observation in the first all sky survey in April 2020 is shown with a grey dotted line.

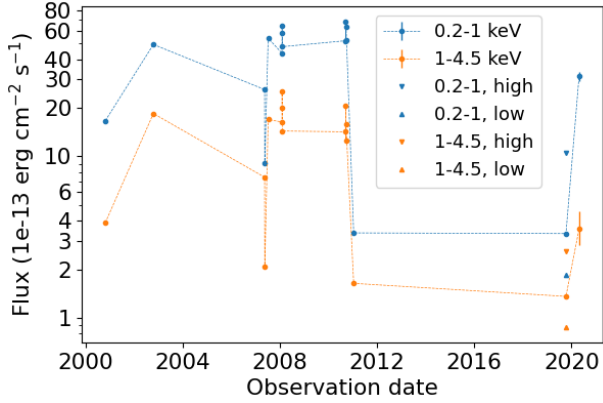
The flux at the effective wavelength of the UVW1 filter (i.e. 2910 Angstrom) was computed from the omichain count rates using the correction factors listed in the OM\_COLORTRANS\_0010.CCF calibration file. The average UVW1 flux throughout the whole observation is  $1.83 \times 10^{-11}$  erg  $cm^{-2}$   $s^{-1}$ ; it is marginally higher with  $(1.86 \pm 0.01) \times 10^{-11}$  erg  $cm^{-2}$   $s^{-1}$  in the high-flux state. For the low-flux state, the UVW1 flux is consistent with the average flux with  $(1.82 \pm 0.01) \times 10^{-11}$  erg  $cm^{-2}$   $s^{-1}$ .

In Fig. 4 we show the OM-UVW1 and (EPIC-pn) 2 keV luminosity for the high and low count rate state of 1H 0707–495 compared to other NLS1s (e.g. Gallo 2006) and to broad-line AGNs (e.g. Liu et al. 2016) in the  $L_X-L_{UV}$  plane (e.g. Lusso & Risaliti 2016; Arcodia et al. 2019, and references therein).

From this comparison, it is clear that even the brighter state observed in our joint eROSITA/XMM-Newton observation is under-luminous in X-rays with respect to typical NLS1s and to past 1H 0707–495 observations as well (Gallo 2006; Fabian et al. 2009). This indicates that we indeed observe an unusually X-ray-weak state of 1H 0707–495, especially when compared to other NLS1s given their UV emission. Remarkably, the UV level of 1H 0707–495 has remained within comparable values for the last  $\sim 20$  yr (e.g. Robertson et al. 2015; Done & Jin 2016, and references therein).

### 3.4. Comparison with 20 yr of XMM-Newton observations and eROSITA all-sky survey observations

The analysis and comparison with 20 yr of XMM-Newton observations from 2000 (Boller et al. 2002) and 2019 (this paper)



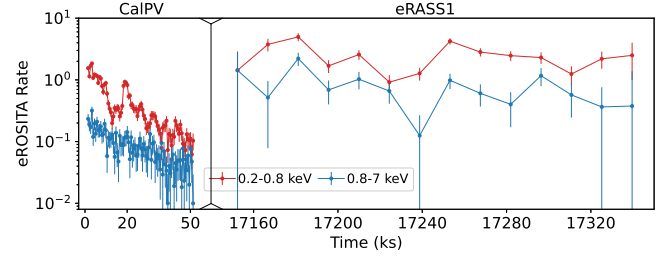
**Fig. 5.** Soft and hard flux distribution of all *XMM-Newton* observations taken since the first observations in 2000 (Boller et al. 2002) and as of 2019 and 2020 (this paper). The energy bands used are (0.2–1.0) and (1.0–4.5) keV, respectively. The flux state of the hard band detected in 2019 simultaneous with the eROSITA observations is at a historical low. For the 2019 observations we also show the soft and hard high- and low-count-rate states. The data points for 2020 show the soft and hard fluxes obtained during the eROSITA all-sky survey observations. For illustration purposes we have connected the individual observations with the thin lines.

reveals that 1H 0707–495 entered a historical low in hard flux band emission, first detected in simultaneous eROSITA *XMM-Newton* observations (see Fig. 5). The lowest hard-band flux measured during the 2019 *XMM-Newton* observations is about  $1.36 \times 10^{-13} \text{ erg cm}^{-2} \text{ s}^{-1}$  (this paper), about a factor of 15 lower than the highest hard flux value recorded, which was about  $2.0 \times 10^{-12} \text{ erg cm}^{-2} \text{ s}^{-1}$  (Dauser et al. 2012). The soft band flux detected in the 2019 observations is  $3.33 \times 10^{-13} \text{ erg cm}^{-2} \text{ s}^{-1}$ , consistent with the observations from 2010 (Dauser et al. 2012), but still also a factor of about 20 lower compared to the highest soft-band flux states of about  $7 \times 10^{-12} \text{ erg cm}^{-2} \text{ s}^{-1}$ .

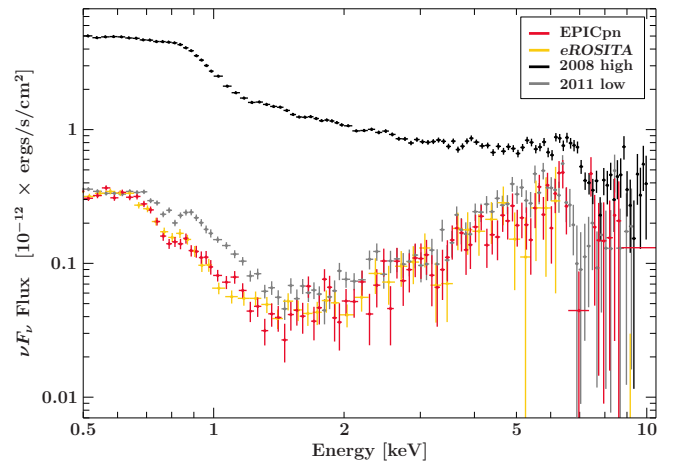
1H 0707–495 was also observed during the first eROSITA all-sky survey scan (eRASS1) between April 26 and 29 in 2020. In each eRASS, every point in the sky is observed a few times (depending on the location of the source in the sky, the number increasing towards high ecliptic latitudes) for  $\sim 40$  s every  $\sim 4$  h. For 1H 0707–495, the net exposure is 407 s with 392 counts observed in total in the 0.2–7.0 keV band. To convert counts to rates, we applied point spread function (PSF)-loss and vignetting corrections because the source enters the field of view (FoV) in each passage at different offset angles. We extracted the light curves in the soft and hard energy bands from the survey data. Figure 6 shows the comparison between the eROSITA PV and eROSITA eRASS1 observations for the soft (0.2–0.8 keV) and hard (0.8–7.0 keV) energy bands on a logarithmic scale. The soft light-curve count rate increased again during the eRASS1 observations, with less amplitude variability than seen in the PV observations, and the hard band count rate also increased. We also report the related soft and hard band fluxes in Fig. 5.

#### 4. Spectral analysis

In the previous section we show that the soft-band light curve displays extreme and significant X-ray variability while the hard-band light curve is less variable. Figure 7 shows the full eROSITA and *XMM-Newton* EPIC pn spectrum of the 2019 observation. For comparison, previously observed spectra of the highest and lowest flux states from 2008 (327 ks, Fabian et al. 2009) and 2011 (80 ks, Fabian et al. 2012), respectively, are



**Fig. 6.** eROSITA CalPV (observation on October 11, 2019) and eRASS1 (started on April 26, 2020) light curves in the 0.2–0.8 (red) and 0.8–7 (blue) keV bands. The CalPV light curves obtained using three cameras (TM5,6,7) are normalised to seven cameras, as all seven cameras were active during the eRASS1 observation. During the eROSITA all-sky survey observations both the soft- and hard-band count rates increased. The variability in the soft and hard bands is not as dramatic as that seen in the PV observations.



**Fig. 7.** Comparison of the eROSITA and *XMM-Newton* observations using selected previous data; including the highest flux state observed in 2008 (327 ks Fabian et al. 2009) and the low flux state in 2011 (80 ks Fabian et al. 2012).

shown. As seen in the overall flux evolution of 1H 0707–495 (Fig. 5), the source in 2019 was caught in a very low flux state, with a flux even lower than that observed in 2011 (Fabian et al. 2012).

The spectral shape of 1H0707–495 is characterised by a strong soft component, followed by an almost flat part, and then a strong drop at around 7 keV first reported by Boller et al. (2002). A number of alternative models have been discussed to explain this shape; see Fabian et al. (2012) for a discussion. These models generally explain the spectrum as a combination of relativistic reflection (e.g. Hagino et al. 2016) together with a strong soft excess, as well as superimposed absorption features caused by a strong wind (Dauser et al. 2012). In the following we use these earlier studies to guide our spectral analysis, concentrating on the cause of the spectral variability seen here. We note that other models based on inhomogeneous accretion flows (e.g. Merloni et al. 2006) have also been proposed to explain the complex spectral and timing properties of NLS1s with near-Eddington accretion flows.

##### 4.1. Relativistic reflection model

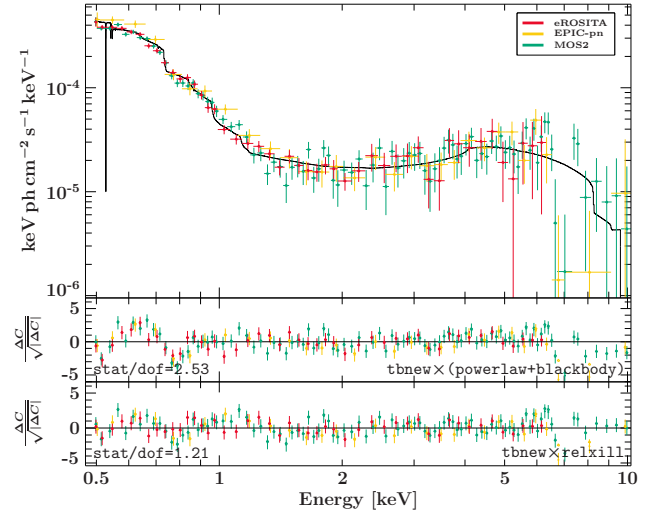
Due to the spectral similarity to the 2011 observation (see Fig. 7), guided by Fabian et al. (2012) and in agreement with analyses of

the higher flux states (e.g. Fabian et al. 2009; Zoghbi et al. 2010; Dauser et al. 2012) we describe the combined 0.5–10 keV data with a relativistic reflection model. For this analysis all spectra were optimally binned according to Kaastra & Bleeker (2016) and modelled using the Cash (1979) statistic.

Foreground absorption is accounted for using `tbnew` (Wilms et al. 2000) with abundances from Wilms et al. (2000), fixing the equivalent hydrogen column density to the Galactic 21 cm equivalent width of  $4.02 \times 10^{20} \text{ cm}^{-2}$  (HI4PI Collaboration 2016). The redshift to the source is set to  $z = 0.04057$  (Jones et al. 2009). In order to account for potential differences in gain of the data due to cross-calibration between instruments, multiplicative constants (detector constants) for eROSITA ( $C_{\text{eROSITA}}$ ) and MOS2 ( $C_{\text{MOS2}}$ ) with respect to pn were introduced into the models. The relativistic reflection is described with the `relxill` model (Dauser et al. 2010, 2013; García et al. 2014), which calculates the relativistically smeared spectrum reflected from the innermost regions of an ionised accretion disc. `relxill` is based on the `xillver` model (García et al. 2013) for non-relativistic reflection. Based on previous results, which suggest a very compact primary source of radiation (Dauser et al. 2012; Fabian et al. 2012) we use the `relxillp` lamp-post flavor, `relxillp`, which assumes that the primary source of the X-ray radiation is compact and located above the black hole on its rotational axis. The incident radiation from this source, the so-called “corona”, takes the form of a power law with an exponential cutoff fixed at  $E_{\text{cut}} = 300 \text{ keV}$ . The strength of the reflection component is parameterised by the source intrinsic reflection fraction,  $f_{\text{refl}}$ . It is defined in the frame of the primary source as the fraction of photons emitted towards the disc compared to the fraction emitted towards the observer (see, Dauser et al. 2016, for a detailed definition). As detailed in Dauser et al. (2014), in the case of a low source height the strong light-bending effects would lead to most photons being focused on the disc and therefore easily to a reflection fraction of ten and larger.

Applying this relativistic reflection model to the eROSITA, EPIC-pn, and EPIC-MOS2 spectra provides a good description of the data (with statistic/d.o.f. = 1.21). The spectra and the corresponding model are shown in Fig. 8 and the best-fit parameters are listed in Table 2. We emphasise that no additional empirical black-body component is necessary to achieve a good fit when applying this relativistic reflection model to the data. Adding an additional low temperature ( $kT \sim 0.1 \text{ keV}$ ) black-body component does not improve the fit statistics. For completeness, the comparison to a simple power law plus black body model is also shown in Fig. 8.

The best-fit parameters of this model are in good agreement with previous results on relativistic reflection modelling of 1H 0707–495. Similarly to previous studies (Fabian et al. 2012, 2009, 2004; Kara et al. 2015), iron is highly overabundant, with an abundance of  $A_{\text{Fe}} = 10.0^{+0.0}_{-1.5}$  which is consistent with the upper limit allowed by the reflection model. With  $\Gamma = 2.64^{+0.04}_{-0.08}$ , the recovered photon index of the incident power law is also in agreement with these earlier studies. The spin parameter is well constrained, with a value of  $a = 0.9960^{+0.0013}_{-0.0030}$ , which is close to maximal spin, while the height of the primary source,  $1.39^{+0.023}_{-0.142} r_g$ , implies a very compact X-ray source that is extremely close to the black hole. These values are also consistent with earlier studies employing the lamp-post geometry (Fabian et al. 2012; Dauser et al. 2012; Kara et al. 2015). While these parameters tend to be consistent between the different earlier observations, the inclination of the accretion disc was found to vary widely, ranging from  $23^\circ$  (Fabian et al. 2002) up to  $78^\circ$  (Dauser et al. 2012). The value found in the present



**Fig. 8.** eROSITA, EPIC-pn and EPIC-MOS2 spectra of the entire observation, including the best fit relativistic reflection model (*upper panel*, brown, solid line). *Middle panel*: residuals of the best-fitting empirical model with a blackbody used to describe the soft excess and *lower panel*: residuals for the relativistic reflection model. The spectra have been re-binned for plotting purposes only, for visual clarity. The spectra of EPIC-MOS2 and eROSITA were re-scaled to the flux normalisation of the EPIC-pn, using the best fit detector constants.

**Table 2.** Best-fit parameters and confidence intervals for the relativistic reflection model applied to the full observations, including both eROSITA and *XMM-Newton* data.

Parameter	Value and confidence
$\text{spin}^a$	$0.9960^{+0.0013}_{-0.0030}$
$\theta [^\circ]$	$73.1^{+1.8}_{-1.6}$
$\Gamma$	$2.64^{+0.04}_{-0.08}$
$h [r_g]$	$1.385^{+0.023}_{-0.142}$
$\text{norm}_{\text{relxillp}}^b$	$(3.9^{+26.0}_{-2.4}) \times 10^{-4}$
$f_{\text{refl}}^c$	$46^{+13}_{-10}$
$A_{\text{Fe}}^d$	$10.0^{+0.0}_{-1.5}$
$\log \xi^e$	$0.73^{+0.12}_{-0.15}$
$C_{\text{MOS2}}$	$1.14 \pm 0.07$
$C_{\text{eROSITA}}$	$0.985^{+0.031}_{-0.030}$
C-statistic/d.o.f.	353.3/291

**Notes.** This is not our final model. <sup>(a)</sup>Dimensionless spin parameter  $cJ/GM^2$  where  $M$  is the black hole mass and  $J$  is the angular momentum. <sup>(b)</sup>See Dauser et al. (2016). <sup>(c)</sup>Reflection fraction, see Dauser et al. (2014). <sup>(d)</sup>Iron abundance with respect to solar values (Grevesse et al. 1996). <sup>(e)</sup>Ionisation parameter, defined as  $\xi = 4\pi F/n$  where  $F$  is the incident flux and where  $n$  is the particle density.

analysis,  $\theta = 73.1^{+1.8}_{-1.6}$ , is at the upper end of this range. However, we emphasise that the self-similarity of reflection spectra in the lamp-post geometry results in a degeneracy between inclination and lamp-post height  $h$  (Dauser et al. 2012), which might be the reason for the large spread of observed inclinations. Recently, Szanecki et al. (2020) applied their newly developed relativistic reflection model to an extended lamp-post source and confirm the compact nature of the corona in agreement with the interpretation presented in the present study.

Interestingly, with  $\log \xi = 0.73_{-0.15}^{+0.12}$ , the ionisation parameter of the accretion disc is low compared to previous analyses (Fabian et al. 2002, 2004, 2012; Hagino et al. 2016; Kosec et al. 2018). Only Kara et al. (2015) report a lower value of  $0.3_{-0.2}^{+0.3}$  when also using the `relxilllp` model on *Nustar* data from 2014.

The reflection fraction is determined to be very high with  $f_{\text{refl}} = 46_{-10}^{+13}$ , implying that most of the radiation emitted from the primary source is reflected on the disc and only a minor fraction is directly observed. This result is in agreement with previous observations starting with Fabian et al. (2002), all consistently finding that 1H 0707–495 is extremely reflection dominated<sup>2</sup> (see, e.g. Kara et al. 2015). Calculating the expected reflection fraction for such a point-like lamp-post source close to a very rapidly rotating black hole leads to values of  $f_{\text{refl}}^{\text{LP}} = 12\text{--}20$  (see Dauser et al. 2014). This is in rough agreement with the high values we find, but still suggests a certain difference between the primary source in 1H 0707–495 and the standard lamp-post source.

Inspecting the residuals of the relativistic model in Fig. 8 in more detail reveals that the drop in flux around 6 to 7 keV is not entirely correctly modelled. However, we note that a fast absorption by an ionised outflow as discovered by Done et al. (2007); Dauser et al. (2012) might explain why the model over-predicts the flux around 7 keV. Tailoring a disc wind model to the parameters of the 1H 0707–495 system, Hagino et al. (2016) were able to partly explain this drop as ionised absorption seen under different velocities because of a wind cone emitted between  $45^\circ$  and  $56^\circ$  which is intercepting the line of sight. A detailed analysis of all available data by Kosec et al. (2018) appears to be in support of the existence of an ultra-fast stratified outflow in 1H 0707–495.

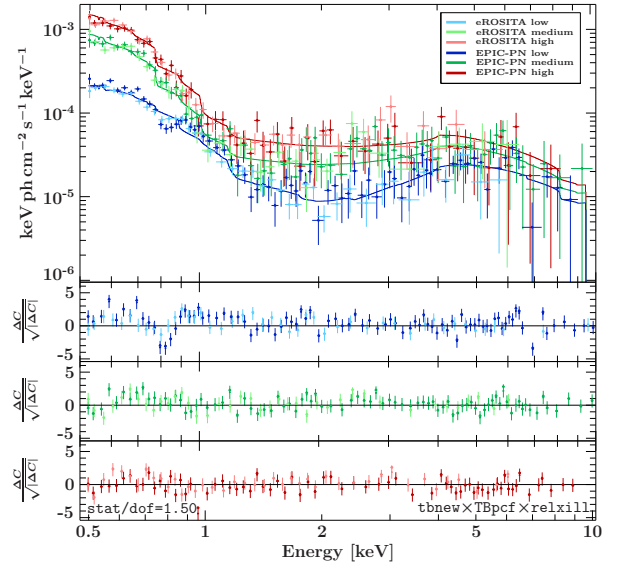
#### 4.2. Spectra at high, medium, and low count rates

In order to investigate the effect of the strong flux variability during the observation, we created three flux-resolved spectra, selected based on count-rate segments highlighted in Fig. 1. The specific times of the selection are given in Sect. 2. As already seen by the detailed analysis of the light curves in different bands (see Sect. 3), the majority of the flux variability is detected below 1 keV.

Figure 9 compares the eROSITA and EPIC-pn spectra in the three selected count-rate intervals. In the following sections, we explore the time evolution of the spectra with a partial covering model with relativistic reflection.

#### 4.3. A changing partial coverer

Considering that X-ray absorption has a greater effect on the soft energies, we now check whether varying absorption can explain the large changes observed in the soft flux of 1H 0707–495. To test this hypothesis we employed the partial covering model `TBpcf` (Wilms et al. 2000) to act as a changing absorption component in the line of sight towards the emission region. In order to test this scenario, we fitted the spectra of all count-rate states simultaneously, keeping all parameters of the continuum the same, including the column density of the partial coverer,  $N_{\text{H}}$ . The only parameters that were allowed to vary between the two observations are the ionisation parameter of the reflection model and the covering fraction,  $f_{\text{pc}}$ , of the partial coverer. All



**Fig. 9.** Count-rate-selected eROSITA and EPIC-pn spectra extracted from time windows highlighted in Fig. 1. The underlying model is the best-fitting reflection model absorbed by a partial coverer with varying covering fraction. The corresponding parameters are listed in Table 3. The data are strongly re-binned to facilitate visual inspection. Data of MOS2 are used in the spectral fits, but omitted in this plot to provide a clearer view. *Lower panels:* residuals belonging to each flux state. The spectra of eROSITA are scaled according to the fitted detector constant to match the EPIC-pn data. The wind is directly detected from the more prominent edge at 0.8 keV in the low-flux state.

parameters as determined from the best fit are listed in Table 3. A decomposition of the relativistic model for each flux state is shown in Fig. 10.

The best fit in this configuration yields  $\text{stat/d.o.f.} = 1209.3/806 = 1.50$ , which means that the overall very strong variability can be explained solely by a variation of the covering fraction of the absorber and by a variation of the ionisation of the reflector. Over the course of the observation, the covering fraction  $f_{\text{pc}} < 0.05$  for the highest flux states and then increases to  $f_{\text{pc}} = 0.28_{-0.22}^{+0.16}$  in the medium-flux spectrum and  $f_{\text{pc}} = 0.75 \pm 0.06$  in the low-flux spectrum. We note that the time sequence of flux states is high-medium-low-medium-low. Because of low number statistics, we had to merge the two medium and the two low states in order to derive constrained covering fractions. Care is therefore needed when interpreting the covering fraction evolution.

For the parameters tied between the flux-selected spectra, a comparison with the best fit to the combined spectrum (see Table 2) shows that the photon index  $\Gamma$ , the reflection fraction  $f_{\text{refl}}$ , the inclination  $\theta$ , the lamp-post height  $h$ , and the spin  $a$  are consistent with the results from the combined spectra. Only the iron abundance is now reduced to a more reasonable value of  $Z_{\text{Fe}} = 4.8_{-1.2}^{+3.8}$ , possibly implying that the very high abundances found also in the earlier observations might be due to soft variability which was ignored in the analysis.

Initial fits where we kept the ionisation parameter of the reflector linked between flux-selected spectra did not yield a satisfactory description of the data, with significant residuals remaining in the 1 keV band, which we attribute to emission in the Fe *L* band. We therefore allowed the ionisation parameter to vary between the three count-rate-selected spectra, which led to a good fit to the data. We note that we would not expect most other parameters such as the spin or the inclination to vary during

<sup>2</sup> In case a relativistic reflection model is used to describe the data; see above for alternative explanations.

**Table 3.** Best-fit parameters and confidence intervals for our best-fit model fitting the data of the three flux states simultaneously.

Parameter	Low (1)	Medium (2)	High (3)
Time-dependent parameters			
$\text{norm}_{\text{relxillp}} (\times 10^{-3})$	$3.5^{+1.6}_{-1.2}$	$4.7^{+2.9}_{-2.1}$	$5.6^{+2.9}_{-2.8}$
$f_{\text{pc}}$	$0.75 \pm 0.06$	$0.28^{+0.16}_{-0.22}$	$< 0.05$
$\log \xi$	$1.74^{+0.05}_{-0.04}$	$0.64^{+0.17}_{-0.24}$	$0.68^{+0.10}_{-0.21}$
Time-independent parameters			
$N_{\text{H}} [10^{22}/\text{cm}^2]$		$12^{+6}_{-4}$	
$A_{\text{Fe}}$		$4.8^{+3.8}_{-1.2}$	
$\theta$ [deg]		$74.4^{+1.4}_{-1.9}$	
spin		$0.9968 \pm 0.0013$	
$\Gamma$		$2.73^{+0.10}_{-0.09}$	
$h$ [ $r_{\text{g}}$ ]		$1.25^{+0.11}_{-0.04}$	
$f_{\text{refl}}$		$46^{+18}_{-16}$	
$C_{\text{MOS2}}$		$1.04 \pm 0.06$	
$C_{\text{eROSITA}}$		$0.954^{+0.030}_{-0.029}$	
stat/d.o.f.		$1209.3/806$	

**Notes.** The model consists of relativistic reflection in combination with a changing partial coverer. If only one value is given per row, this means it was tied between all spectra. See Table 2 for an explanation of the symbols used.

the observation. The only parameter that has been suggested to change (see, e.g. Kara et al. 2015) is the height of the primary source. In our case a constant height satisfactorily describes the data and a potential additional change of the height cannot be detected. This can also partly be attributed to the lower S/N in these spectra.

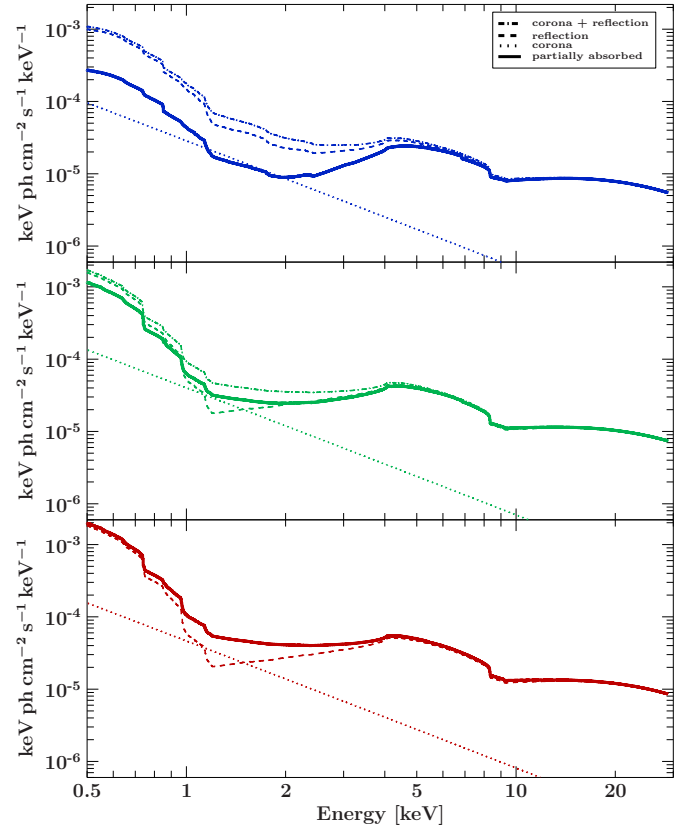
The ionisation parameter changes from a consistent and fairly low ionisation for the high- and medium-flux-selected spectra ( $\log \xi = 0.68^{+0.10}_{-0.21}$  and  $\log \xi = 0.64^{+0.17}_{-0.24}$ , respectively) to a larger value of  $\log \xi = 1.74^{+0.05}_{-0.04}$  in the low-flux spectrum.

As we discuss below, this change is likely not a physical change of the reflection component but the fit compensating for non-modelled ionisation in the absorber. In order to test a possible ionised partial coverer we used the model `zxcipcf` (Reeves et al. 2008). Unfortunately, because of the brevity of the observations, the data are insufficient for a significant constraint to be put on the ionisation of the absorber. Even when freezing all `relxill` parameters and only allowing the normalisation, reflection fraction, and partial coverer fractions to vary freely, the ionisation in the medium flux state is completely unconstrained. In the low-flux state, the ionisation parameter is weakly constrained to  $\log \xi < 2$ , but because of the low S/N, this value should be treated with care. Longer observations would be required to analyse the ionisation of the partial coverer. The low count-rate statistics do not allow us to constrain the ionisation of the absorber directly from the observations.

## 5. Physical Interpretations

### 5.1. The extreme and varying UV-to-X-ray flux ratio

One important new observational result is that within less than one day the ratio of UV to X-ray emission shows large variations.



**Fig. 10.** Decomposition of the model, for each count-rate state, into the radiation of the corona, which can be directly observed (dotted); the radiation reflected by the disc reaching the observer (dashed); the sum of both (dashed-dotted); and this sum partially absorbed (solid). *Upper, middle, and bottom panels:* low, medium and high count-rate states, respectively. As the covering fraction in the high regime is zero, there is no absorption of the emitted primary and reflected spectra. The Galactic foreground absorption is not shown in this plot.

The UV emission is rather constant with  $L_{\text{UV}} \approx 10^{44}$  erg  $\text{s}^{-1}$ , similar to the values reported by Done & Jin (2016), before applying bolometric corrections, which is close to the Eddington limit. On the other hand, the X-rays emission drops in amplitude by more than a factor of 50 (cf. Fig. 1). A strongly varying X-ray flux during a constant UV flux was detected over timescales shorter than one day. Buisson et al. (2017) analysed a sample of 21 AGNs using data from the Swift satellite to study the variability properties of the population in the X-ray, UV, and optical bands. For 9 out of their 21 sources, the UV is lagging the X-rays. For 1H 0707–495, the authors did not find strong correlations between the X-ray and the UV, similar to the results reported in this paper. Buisson et al. (2017) found 1H 0707–495 in a low-flux state during their Swift observations and argue that in such cases the source height of the illuminating corona is low, similar to the values reported in Table 2 in this paper, which makes it difficult to detect UV–X-ray time lags. In the previous section, we infer that the X-ray variations are primarily due to varying covering fraction of a partial absorber. This does not seem to affect the UV, which implies that these are caused by independent physical processes. During the eROSITA CalPV observations, 1H0707–495 is extremely under-luminous in the X-ray compared to other NLS1s and BLS1s (cf. Fig. 4) as well as to the 1H 0707–495 high-flux-state observations from Fabian et al. (2009). This supports the interpretation that the X-rays are suppressed in this observation, and



### 5.3. Partially covering absorbers and ultra-fast outflows

Outflowing winds launched from the accretion disc by radiation pressure or magnetic fields are considered as an important AGN feedback process. For radiation-pressure-dominated winds, outflows can reach velocities up to about 0.3  $c$  and can drive substantial amounts of material into the interstellar medium. These winds have been discovered mainly based on *XMM-Newton* observations (e.g. Pounds et al. 2003a,b,c; King & Pounds 2003; Reeves et al. 2003). Outflowing winds with such high velocities have been named as UFOs by Tombesi et al. (2010) in a systematic study of bright *XMM-Newton* AGNs.

Multiple outflow absorption lines have been detected in one of the most variable AGNs, IRAS 13224–3809, by (Parker et al. 2017). These latter authors argue that the X-ray emission from within a few gravitational radii of the black hole is ionising the disc winds up to hundreds of  $R_G$ . It was also shown that the outflow absorption lines are strongly flux dependent, with strongest being found in the low-flux state and weakest in the high-flux state, which is due to increasing ionisation towards higher flux values. When the ionisation becomes sufficiently high, the outflow may become “over-ionised” and may no longer be visible. Such a scenario was also discussed by Gallo et al. (2019), where absorption features were detected in the beginning of a flare in the NLS1 Mrk 335 but not in the brightest prolonged flare states.

Ionised outflowing winds have been connected to absorbing partial covering by for example Reeves et al. (2018) and references therein. These latter authors argue that the outflowing wind is inhomogeneous and more complex than a simple homogeneous outflow, which is capable of partially covering the X-ray source. In this scenario, the X-ray absorption depends on the ionisation state, the distance of the absorber, and the covering fraction.

The two *XMM-Newton* observations of PDS 456 reported by Reeves et al. (2018) were made over two consecutive satellite orbits. These latter authors argue that much of the spectral variability between the observations appears to be reproduced by the variability of the low-ionisation partial covering absorber, which is primarily driven by a change of the covering fraction. This appears consistent with the low-flux states and the varying covering fractions reported for PDS 456 and now for 1H 0707–495 in this paper.

Partial covering absorbers have been put into context with UFOs and winds in several other papers. Reeves et al. (2020) provide a further exploration for the spectral shape and variability of PDS 456, noting in particular the significant differences in the soft-band fit when using neutral and ionised partial-covering components. There are many other works that analyse the soft- and hard-band emission and absorption features in PDS 456, concluding that an outflowing absorber can explain these features as well as the observed variability (e.g. Matzeu et al. 2016b,a; Parker et al. 2018).

A larger sample of Seyfert galaxies analysed in Tombesi et al. (2013) also reveals that many AGNs that display UFO signatures also show evidence for warm absorption, and based on their observed properties, these latter authors propose that these may actually be part of a single large-scale outflow. Simultaneous observations of absorption and outflowing components are also presented for individual sources, including Mrk 335 (Longinotti et al. 2019, but see also Gallo et al. 2019) and PG 1211+143 (Pounds et al. 2016). This lends further support to the idea that such components may be physically linked and appear simultaneously, as in the observations presented in this work.

### 5.4. Speculations on the partial coverer size and location

Because the absorption is only partial, we can place limits on the projected size of the absorber. For such an extreme configuration of compact corona and large black hole spin, most of the observed flux is due to reflection from within a radius of 5–10  $R_g$  around the black hole (Dauser et al. 2013), suggesting that the absorbing structure is smaller than this scale.

From Fig. 1 we estimate that a first obscuration event is seen between times  $t_0$  and  $t_3$  for about 20 000 s where the count rate decreases from the highest count-rate state to the lowest count-rate state. Between  $t_3$  and  $t_4$ , the count rate increases again but probably with the covering fraction found in the medium-flux state. A third obscuration event might be detected from  $t_4$  until the end of the eROSITA observations, where the source is found in the lowest count-rate state with the highest covering fraction.

To estimate the distance of the absorbing cloud we adopt Eq. (2) of Beuchert et al. (2017). Considering cloud number densities  $n_H$  from  $10^9$  to  $10^{10}$   $\text{cm}^{-3}$  yields distances from 11  $R_G$  to 1100  $R_G$  for the first obscuration event, which assumes Keplerian orbits, corresponding to an orbital velocity of 0.2  $c$  to 0.02  $c$ . To change the covering fraction from the  $t_0$  to  $t_3$  from less than 0.1 to 0.73 within about 20 000 s, the projected length of the absorber is in the range of  $1.2 \times 10^{13}$  to  $1.2 \times 10^{14}$  cm, or 0.03 to 0.3 light days. This seems reasonable but we avoid further speculation on distances and sizes of the absorber in order not to over-interpret the available data.

## 6. Summary

We detected large-amplitude variability with changes of more than a factor of 50 in the eROSITA light curves. The soft band (0.2–0.8 keV) dominates the variability, while in the hard band (0.8–7.0 keV) the variability is much less extreme. We further analysed the soft X-ray light curve, dividing the soft-band light curve into two very soft X-ray light curves in the energy bands (0.2–0.5) and (0.5–0.8) keV. Both ultra-soft X-ray light curves are close to identical in their count-rate distributions as a function of time. Above 0.8 keV, the variability abruptly declines up to the highest energies. This behaviour is further confirmed by analysing the normalised excess variance spectra (see Fig. 3), where all instruments detect significant variability up to 0.8 keV, followed by a sharp drop off. This is the first time that such large-amplitude ultra-soft variability has been detected with eROSITA observations in AGNs. There are two sources with similar but less extreme ultra-soft variability behaviour, GSN 069 (Miniutti et al. 2019) and RX J1301.9+2747 (Giustini et al. 2020).

No significant variability was detected in the UV in the *XMM-Newton* OM observations. The UV emission is relatively constant with  $L_{UV} \approx 10^{44}$   $\text{erg s}^{-1}$ , similar to the values reported by Done & Jin (2016) which is close to the Eddington limit. In the combined eROSITA and *XMM-Newton* observation, 1H 0707–495 was caught in a historically low hard-flux state, similar to the low flux state reported by Fabian et al. (2012).

We use the relativistic reflection model *relxill* (Dauser et al. 2010, 2013; García et al. 2014) to fit the data, and find parameters in good agreement with these latter publications. Spectral changes were investigated by constructing three count-rate-selected spectra, to which the partial covering model *TBpcf* (Wilms et al. 2000) in combination with the *relxill* model was applied. The majority of the change in spectral shape during this observation can be fully explained by a varying covering fraction, rather than varying column density or ionisation. We conclude that the large variability of the soft flux detected in the

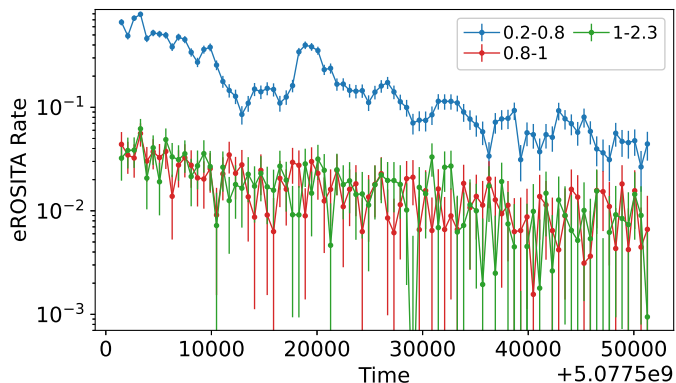
light curve is fully consistent with the varying covering fraction interpretation. These findings strongly suggest that the variability and the large change in soft flux during the observation is caused by an AGN obscuration event. Further evidence in support of this scenario is added by the fact that when 1H 0707–495 was observed 6 months later during the eRASS1 survey, its flux returned to the flux level above our unobscured model. eROSITA will observe 1H 0707–495 another seven times every 6 months until completing its all-sky scanning mission.

*Acknowledgements.* We are grateful to M. Page for his help in the *XMM-Newton* OM data analysis. We thank the *XMM-Newton* PS N. Schartel for accepting the simultaneous *XMM-Newton* observations. M.K. acknowledges support by DFG grant KR 3338/4-1. We thank the anonymous referee for their careful reading of the submitted manuscript, and for their very helpful comments and suggestions. This work is based on data from eROSITA, the primary instrument aboard SRG, a joint Russian-German science mission supported by the Russian Space Agency (Roskosmos), in the interests of the Russian Academy of Sciences represented by its Space Research Institute (IKI), and the Deutsches Zentrum für Luft- und Raumfahrt (DLR). The SRG spacecraft was built by Lavochkin Association (NPOL) and its subcontractors, and is operated by NPOL with support from the Max-Planck Institute for Extraterrestrial Physics (MPE). The development and construction of the eROSITA X-ray instrument was led by MPE, with contributions from the Dr. Karl Remeis Observatory Bamberg, the University of Hamburg Observatory, the Leibniz Institute for Astrophysics Potsdam (AIP), and the Institute for Astronomy and Astrophysics of the University of Tübingen, with the support of DLR and the Max Planck Society. The Argelander Institute for Astronomy of the University of Bonn and the Ludwig Maximilians Universität Munich also participated in the science preparation for eROSITA. The eROSITA data shown here were processed using the eSASS/NRTA software system developed by the German eROSITA consortium.

## References

- Ai, Y. L., Yuan, W., Zhou, H., et al. 2013, *AJ*, 145, 90
- Arcodia, R., Merloni, A., Nandra, K., & Ponti, G. 2019, *A&A*, 628, A135
- Beuchert, T., Markowitz, A. G., Dauser, T., et al. 2017, *A&A*, 603, A50
- Boller, T., Brandt, W. N., & Fink, H. 1996, *A&A*, 305, 53
- Boller, T., Brandt, W. N., Fabian, A. C., & Fink, H. H. 1997, *MNRAS*, 289, 393
- Boller, T., Fabian, A. C., Sunyaev, R., et al. 2002, *MNRAS*, 329, L1
- Boller, T., Freyberg, M. J., Trümper, J., et al. 2016, *A&A*, 588, A103
- Boroson, T. A. & Green, R. F. 1992, *AIP Conf. Ser.*, 254, 584
- Brandt, W. N., Fabian, A. C., Nandra, K., Reynolds, C. S., & Brinkmann, W. 1994, *MNRAS*, 271, 958
- Brandt, W. N., Pounds, K. A., & Fink, H. 1995, *MNRAS*, 273, L47
- Brunner, H., Boller, T., Coutinho, D., et al. 2018, *SPIE Conf. Ser.*, 10699, 106995G
- Buisson, D. J. K., Lohfink, A. M., Alston, W. N., & Fabian, A. C. 2017, *MNRAS*, 464, 3194
- Cash, W. 1979, *ApJ*, 228, 939
- Dauser, T., Wilms, J., Reynolds, C. S., & Brenneman, L. W. 2010, *MNRAS*, 409, 1534
- Dauser, T., Svoboda, J., Schartel, N., et al. 2012, *MNRAS*, 422, 1914
- Dauser, T., García, J., Wilms, J., et al. 2013, *MNRAS*, 430, 1694
- Dauser, T., García, J., Parker, M. L., Fabian, A. C., & Wilms, J. 2014, *MNRAS*, 444, L100
- Dauser, T., García, J., Walton, D. J., et al. 2016, *A&A*, 590, A76
- den Herder, J. W., Brinkman, A. C., Kahn, S. M., et al. 2001, *A&A*, 365, L7
- Done, C., & Jin, C. 2016, *MNRAS*, 460, 1716
- Done, C., Sobolewska, M. A., Gierliński, M., & Schurch, N. J. 2007, *MNRAS*, 374, L15
- Fabian, A. C., Ballantyne, D. R., Merloni, A., et al. 2002, *MNRAS*, 331, L35
- Fabian, A. C., Miniutti, G., Gallo, L., et al. 2004, *MNRAS*, 353, 1071
- Fabian, A. C., Zoghbi, A., Ross, R. R., et al. 2009, *Nature*, 459, 540
- Fabian, A. C., Zoghbi, A., Wilkins, D., et al. 2012, *MNRAS*, 419, 116
- Foreman-Mackey, D., Hogg, D. W., Lang, D., & Goodman, J. 2013, *PASP*, 125, 306
- Forster, K., & Halpern, J. P. 1996, *ApJ*, 468, 565
- Gallo, L. C. 2006, *MNRAS*, 368, 479
- Gallo, L. C., Tanaka, Y., Boller, T., et al. 2004, *MNRAS*, 353, 1064
- Gallo, L. C., Gonzalez, A. G., Waddell, S. G. H., et al. 2019, *MNRAS*, 484, 4287
- García, J., Dauser, T., Reynolds, C. S., et al. 2013, *ApJ*, 768, 146
- García, J., Dauser, T., Lohfink, A., et al. 2014, *ApJ*, 782, 76
- Giustini, M., Miniutti, G., & Saxton, R. D. 2020, *A&A*, 636, L2
- Goodrich, R. W. 1989, *ApJ*, 342, 224
- Grevesse, N., Noels, A., & Sauval, A. J. 1996, *ASP Conf. Ser.*, 99, 117
- Grupe, D., Beuerman, K., Mannheim, K., et al. 1995, *A&A*, 300, L21
- Hagino, K., Odaka, H., Done, C., et al. 2016, *MNRAS*, 461, 3954
- Hayashida, K. 1997, *ASP Conf. Ser.*, 113, 40
- HI4PI Collaboration (Ben Bekhti, N., et al.) 2016, *A&A*, 594, A116
- Jansen, F., Lumb, D., Altieri, B., et al. 2001, *A&A*, 365, L1
- Jones, D. H., Read, M. A., Saunders, W., et al. 2009, *MNRAS*, 399, 683
- Kaastra, J. S., & Bleeker, J. A. M. 2016, *A&A*, 587, A151
- Kammoun, E. S., Nardini, E., Zoghbi, A., et al. 2019, *ApJ*, 886, 145
- Kara, E., Fabian, A. C., Lohfink, A. M., et al. 2015, *MNRAS*, 449, 234
- Katayama, H., Hayashida, K., & Hashimoto, K. 2001, *PASJ*, 53, 1133
- King, A. R., & Pounds, K. A. 2003, *MNRAS*, 345, 657
- Kosec, P., Buisson, D. J. K., Parker, M. L., et al. 2018, *MNRAS*, 481, 947
- Laha, S., Markowitz, A. G., Krumpke, M., et al. 2020, *ApJ*, 897, 66
- Laor, A., Fiore, F., Elvis, M., Wilkes, B. J., & McDowell, J. C. 1997, *ApJ*, 477, 93
- Leighly, K. M., & Moore, J. R. 2004, *ApJ*, 611, 107
- Leighly, K. M., Mushotzky, R. F., Yaqoob, T., Kunieda, H., & Edelson, R. 1996, *ApJ*, 469, 147
- Liu, Z., Merloni, A., Georgakakis, A., et al. 2016, *MNRAS*, 459, 1602
- Longinotti, A. L., Kriss, G., Krongold, Y., et al. 2019, *ApJ*, 875, 150
- Lusso, E., & Risaliti, G. 2016, *ApJ*, 819, 154
- Markowitz, A. G., Krumpke, M., & Nikutta, R. 2014, *MNRAS*, 439, 1403
- Mason, K. O., Breeveld, A., Much, R., et al. 2001, *A&A*, 365, L36
- Matzeu, G. A., Reeves, J. N., Nardini, E., et al. 2016a, *Astron. Nachr.*, 337, 495
- Matzeu, G. A., Reeves, J. N., Nardini, E., et al. 2016b, *MNRAS*, 458, 1311
- Merloni, A., Malzac, J., Fabian, A. C., & Ross, R. R. 2006, *MNRAS*, 370, 1699
- Merloni, A., Predehl, P., Becker, W., et al. 2012, *ArXiv e-prints* [arXiv:1209.3114]
- Miller, L., & Turner, T. J. 2013, *ApJ*, 773, L5
- Miniutti, G., Saxton, R. D., Giustini, M., et al. 2019, *Nature*, 573, 381
- Nandra, K., George, I. M., Mushotzky, R. F., Turner, T. J., & Yaqoob, T. 1997, *ApJ*, 476, 70
- Osterbrock, D. E., & Pogge, R. W. 1985, *ApJ*, 297, 166
- Parker, M. L., Pinto, C., Fabian, A. C., et al. 2017, *Nature*, 543, 83
- Parker, M. L., Reeves, J. N., Matzeu, G. A., Buisson, D. J. K., & Fabian, A. C. 2018, *MNRAS*, 474, 108
- Pawar, P. K., Dewangan, G. C., Papadakis, I. E., et al. 2017, *MNRAS*, 472, 2823
- Ponti, G., Cappi, M., Dadina, M., & Malaguti, G. 2004, *A&A*, 417, 451
- Pounds, K. A., King, A. R., Page, K. L., & O'Brien, P. T. 2003a, *MNRAS*, 346, 1025
- Pounds, K. A., Reeves, J. N., King, A. R., et al. 2003b, *MNRAS*, 345, 705
- Pounds, K. A., Reeves, J. N., Page, K. L., Wynn, G. A., & O'Brien, P. T. 2003c, *MNRAS*, 342, 1147
- Pounds, K. A., Lobban, A., Reeves, J. N., Vaughan, S., & Costa, M. 2016, *MNRAS*, 459, 4389
- Predehl, P. 2012, *SPIE Conf. Ser.*, 8443, 84431R
- Predehl, P., Andritschke, R., Arefiev, V., et al. 2021, *A&A*, 647, A1 (eROSITA SI)
- Reeves, J. N., O'Brien, P. T., & Ward, M. J. 2003, *ApJ*, 593, L65
- Reeves, J., Done, C., Pounds, K., et al. 2008, *MNRAS*, 385, L108
- Reeves, J. N., Braitto, V., Nardini, E., et al. 2018, *ApJ*, 867, 38
- Reeves, J. N., Braitto, V., Chartas, G., et al. 2020, *ApJ*, 895, 37
- Risaliti, G. 2013, *From the Dolomites to the Event Horizon: Sledging Down the Black Hole Potential Well*, 29
- Robertson, D. R. S., Gallo, L. C., Zoghbi, A., & Fabian, A. C. 2015, *MNRAS*, 453, 3455
- Strüder, L., Briel, U., Dennerl, K., et al. 2001, *A&A*, 365, L18
- Szanecki, M., Niedzwiecki, A., Done, C., et al. 2020, *A&A*, 641, A89
- Tanaka, Y., Boller, T., & Gallo, L. 2005, in *Growing Black Holes: Accretion in a Cosmological Context*, eds. A. Merloni, S. Nayakshin, & R. A. Sunyaev (Berlin: Springer), 290
- Tombesi, F., Cappi, M., Reeves, J. N., et al. 2010, *A&A*, 521, A57
- Tombesi, F., Cappi, M., Reeves, J. N., et al. 2013, *MNRAS*, 430, 1102
- Trümper, J. 1984, in *X-ray and UV Emission from Active Galactic Nuclei*, eds. W. Brinkmann & J. Truemper, 254
- Turner, M. J. L., Abbey, A., Arnaud, M., et al. 2001, *A&A*, 365, L27
- Vaughan, S., Edelson, R., Warwick, R. S., & Uttley, P. 2003, *MNRAS*, 345, 1271
- Voges, W., Aschenbach, B., Boller, T., et al. 1999, *A&A*, 349, 389
- Wilms, J., Allen, A., & McCray, R. 2000, *ApJ*, 542, 914
- Zoghbi, A., Fabian, A. C., Uttley, P., et al. 2010, *MNRAS*, 401, 2419

## Appendix A: Amplitude variability as a function of energy

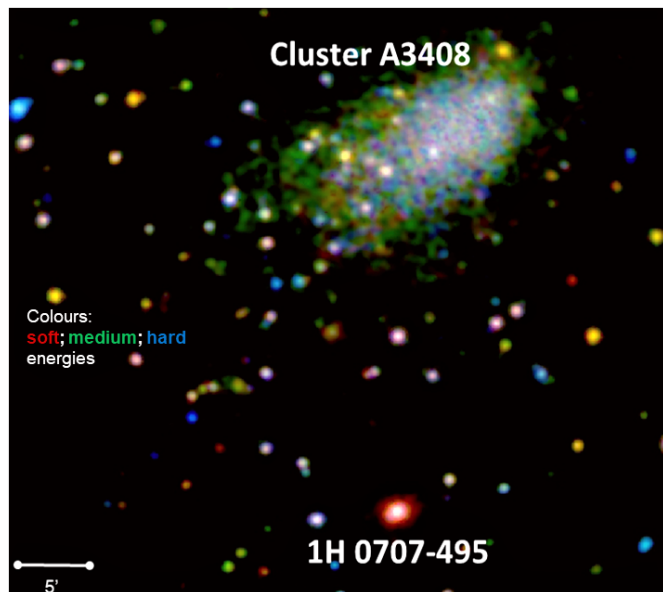


**Fig. A.1.** eROSITA light curve in three energy bands. The energy band up to only 0.8 keV is dominating the amplitude variability, followed by a sudden drop in variability above 0.8 keV.

We analysed the amplitude variability in each of the energy bands. In Fig. A.1 we show the eROSITA light curves in three individual energy bands. The variability is dominant in the energy band up to 0.8 keV, with a sudden drop in variability above 0.8 keV.

## Appendix B: eROSITA PV observation RGB image

In Fig. B.1 we show the eROSITA image obtained during the PV phase observations. The objects are colour coded. Thanks to the large field of view of eROSITA, the galaxy cluster A3408 was also serendipitously covered in addition to the super-soft source



**Fig. B.1.** eROSITA RGB image of the field of view of the PV observations (0.2–0.7 (soft band, red), 0.7–1.5 (medium band, green), and 1.5–5 (hard band (blue))). Besides the primary target 1H 0707–495, the galaxy cluster A3408 has been detected for the first time with high spatial resolution. We also note the detection of a hard (blue) and probably obscured source population only detected above 1.5 keV.

1H 0707–495. This resulted in the best imaging information for this cluster to date compared to ASCA observations (Katayama et al. 2001), revealing a very elongated morphology. The cluster is being studied in detail for a separate publication (Iljenkarevic et al., in prep.).