

Corrigendum

Corrigendum to “A Versatile Surface Bioengineering Strategy Based on Mussel-Inspired and Bioclickable Peptide Mimic”

Yu Xiao,¹ Wenxuan Wang¹, Xiaohua Tian,² Xing Tan,¹ Tong Yang,¹ Peng Gao,¹ Kaiqing Xiong,¹ Qiufen Tu,¹ Miao Wang,² Manfred F. Maitz^{1,3}, Nan Huang¹, Guoqing Pan² and Zhilu Yang¹

¹Key Laboratory of Advanced Technologies of Materials, Ministry of Education, School of Materials Science and Engineering, Southwest Jiaotong University, Chengdu, Sichuan 610031, China

²Institute for Advanced Materials, School of Materials Science and Engineering, Jiangsu University, Zhenjiang, Jiangsu 212013, China

³Max Bergmann Center of Biomaterials, Leibniz Institute of Polymer Research Dresden, Hohe Strasse 6, 01069 Dresden, Germany

Correspondence should be addressed to Guoqing Pan; panguoqing@ujs.edu.cn and Zhilu Yang; zhiluyang1029@swjtu.edu.cn

Received 8 June 2021; Accepted 8 June 2021; Published 30 June 2021

Copyright © 2021 Yu Xiao et al. Exclusive Licensee Science and Technology Review Publishing House. Distributed under a Creative Commons Attribution License (CC BY 4.0).

In the article titled, “A Versatile Surface Bioengineering Strategy Based on Mussel-Inspired and Bioclickable Peptide Mimic” [1], there was an error in Figure 2. In panel (e), the cell pictures of PEG after culture for 24 and 72 h were updated. The corrected figure is shown and is listed as Figure 1.

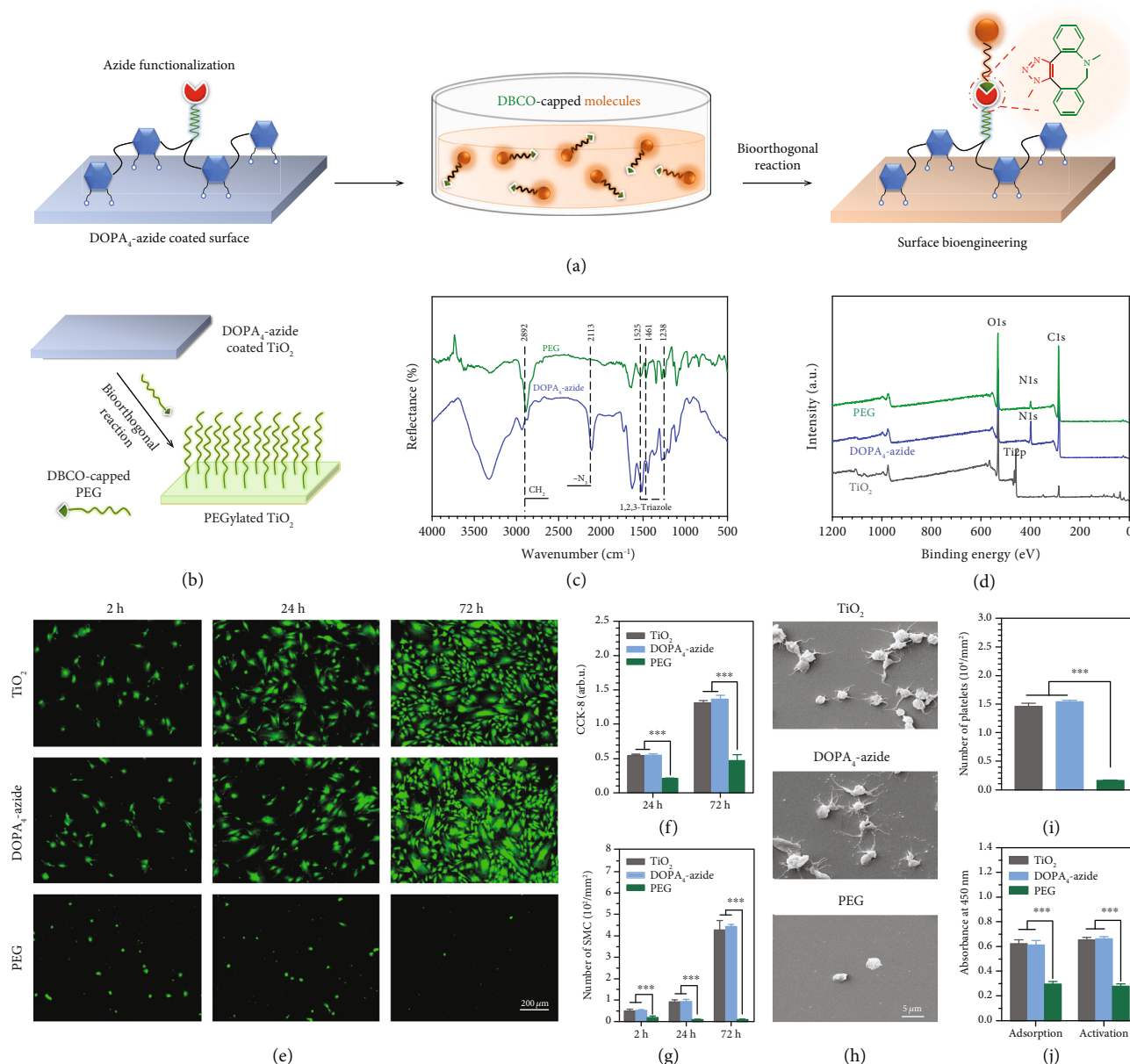


FIGURE 1: (a) Schematic illustration of the DOPA₄-azide coated substrate for second-step surface biomodification through bioorthogonal DBCO-azide click reaction. (b) Bioorthogonal PEGylation on the TiO₂ surface using DBCO-PEG. (c) GATR-FTIR spectra of the DOPA₄-azide coated and PEGylated surfaces. (d) XPS analysis of the TiO₂ surfaces at each step of surface treatments. (e) SMC adhesion at 2, 24, and 72 h. (f, g) SMC proliferation by the CCK-8 assay and cell counting. (h) Scanning electron microscope (SEM) images of adherent blood platelets. (i) Average numbers of adherent blood platelets. (j) Fibrinogen adsorption and activation. Statistically significant differences are indicated by $p < 0.001$.

References

- [1] Y. Xiao, W. Wang, X. Tian et al., "A Versatile Surface Bioengineering Strategy Based on Mussel-Inspired and Bioclickable Peptide Mimic," *Research*, vol. 2020, article 7236946, 12 pages, 2020.